

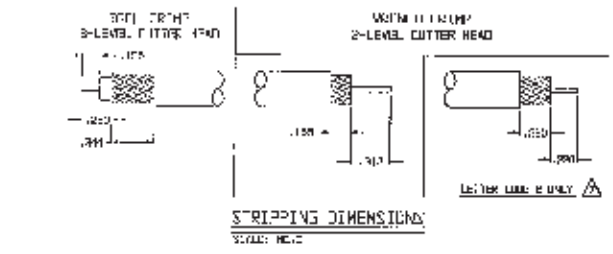
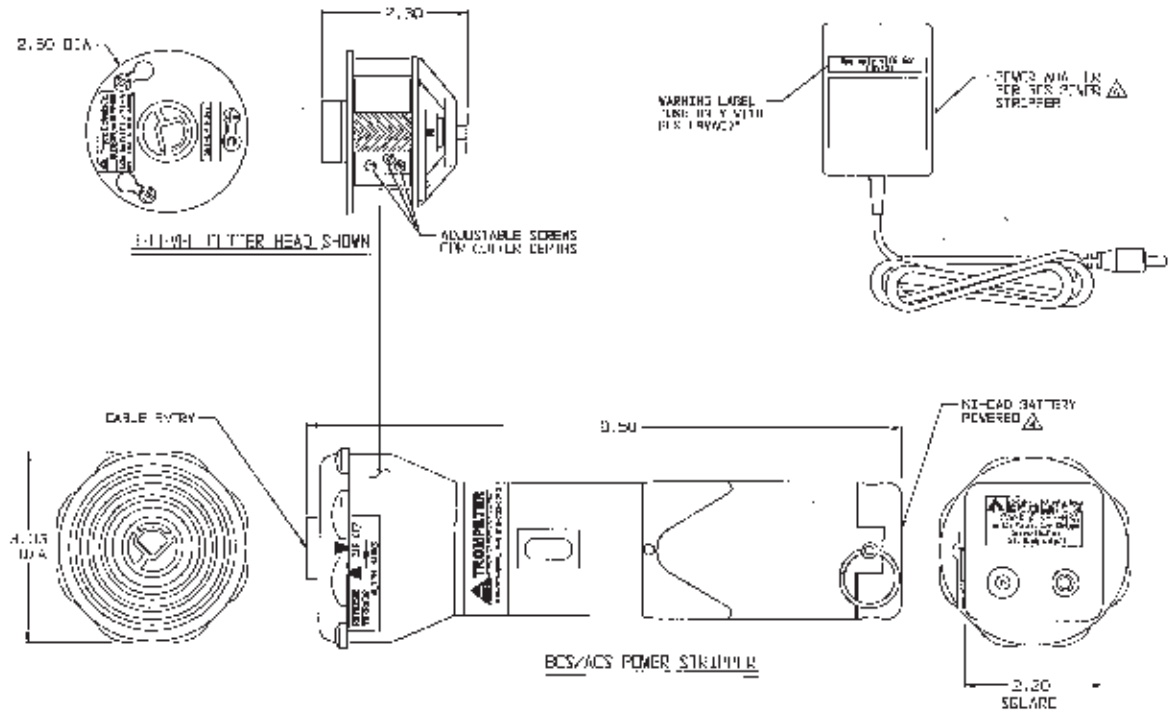
CUTTER LINE	CABLE DIMENSIONS (CABLE TYPE)	CABLE TYPES	REFERENCE CABLE CODE	
			TYPE	NUMBER
A	.070 / .110	RG 174, RG 178, RG 218, RG 219, RG 179, RG 219, RG 218	100	3
I	.110 / .185	RG 100, AT&T 2423, RG 218, RG 219, AT&T 2423, RG 218, RG 219, AT&T 2423, RG 218, RG 219	100	4
B	.150 / .210	RG 218, RG 219, RG 218, RG 219, RG 218, RG 219, RG 218, RG 219, RG 218, RG 219	101	1
C	.150 / .230	RG 100, RG 174, RG 178, RG 218, RG 219, RG 218, RG 219, RG 218, RG 219	101	1
O	.235 / .270	RG 100, RG 174, RG 178, RG 218, RG 219, RG 218, RG 219, RG 218, RG 219	102	1
FI	.271 / .305	RG 100, RG 174, RG 178, RG 218, RG 219, RG 218, RG 219, RG 218, RG 219	101	1
III	.271 / .305	RG 100, RG 174, RG 178, RG 218, RG 219, RG 218, RG 219, RG 218, RG 219	101	3
FA	.300 / .450	RG 100, RG 174, RG 178, RG 218, RG 219, RG 218, RG 219, RG 218, RG 219	101	3

TYPE	WIRE & STRIP	CABLE	REF. NO.
1	100	100	100
2	100	100	100
3	100	100	100
4	100	100	100
5	100	100	100
6	100	100	100
7	100	100	100
8	100	100	100
9	100	100	100
10	100	100	100
11	100	100	100
12	100	100	100
13	100	100	100
14	100	100	100
15	100	100	100
16	100	100	100
17	100	100	100
18	100	100	100
19	100	100	100
20	100	100	100
21	100	100	100
22	100	100	100
23	100	100	100
24	100	100	100
25	100	100	100
26	100	100	100
27	100	100	100
28	100	100	100
29	100	100	100
30	100	100	100
31	100	100	100
32	100	100	100
33	100	100	100
34	100	100	100
35	100	100	100
36	100	100	100
37	100	100	100
38	100	100	100
39	100	100	100
40	100	100	100
41	100	100	100
42	100	100	100
43	100	100	100
44	100	100	100
45	100	100	100
46	100	100	100
47	100	100	100
48	100	100	100
49	100	100	100
50	100	100	100
51	100	100	100
52	100	100	100
53	100	100	100
54	100	100	100
55	100	100	100
56	100	100	100
57	100	100	100
58	100	100	100
59	100	100	100
60	100	100	100
61	100	100	100
62	100	100	100
63	100	100	100
64	100	100	100
65	100	100	100
66	100	100	100
67	100	100	100
68	100	100	100
69	100	100	100
70	100	100	100
71	100	100	100
72	100	100	100
73	100	100	100
74	100	100	100
75	100	100	100
76	100	100	100
77	100	100	100
78	100	100	100
79	100	100	100
80	100	100	100
81	100	100	100
82	100	100	100
83	100	100	100
84	100	100	100
85	100	100	100
86	100	100	100
87	100	100	100
88	100	100	100
89	100	100	100
90	100	100	100
91	100	100	100
92	100	100	100
93	100	100	100
94	100	100	100
95	100	100	100
96	100	100	100
97	100	100	100
98	100	100	100
99	100	100	100
100	100	100	100

REVISIONS		010-0093	313
REV	DESCRIPTION		
1	U-SLE P111N		
2	REVISED PER ECU 1314		

RED INDICATES ORIGINAL

- ⚠ SEE SPECIAL STRIPPING DIMENSIONS
6. EACH ITEM MAY BE SOLD SEPARATELY
7. EACH KIT IS SUPPLIED WITH A 12.5 X 0.5 X 0.4 CARRYING CASE AND USER INSTRUCTIONS
- ⚠ INDIVIDUAL BATTERY OR OPTIONAL POWER SOURCE MAY BE ORDERED AS SUPPLY FOR TABLE 2
8. EXAMPLE OF LUNAR-16 NUMBER
- 1115 / C24T 3 A
- 1115 - CABLE SIGNAL LETTER CODE (SEE TABLE 1)
 - 3 - 3-LEVEL FOR TOOL CRIMP
 - 2 - 2-LEVEL FOR WIRE CRIMP
 - CUTTER HEAD BASIC PART NO.
- POWER STRIPPER KIT:
- BLS - NI-CAD BATTERY WITH AC & DC CHARGER FOR NORTH & SOUTH AMERICA
 - BCS - NI-CAD BATTERY WITH AC & DC CHARGER AND RAPID CHARGER FOR NORTH & SOUTH AMERICA
 - BCEU - NI-CAD BATTERY WITH AC & DC CHARGER FOR EUROPE
 - BCK - NI-CAD BATTERY WITH AC & DC CHARGER FOR UNITED KINGDOM
 - ACS - AC POWER CONVERTER FOR NORTH & SOUTH AMERICA
 - ACEU - AC POWER CONVERTER FOR EUROPE
 - ACK - AC POWER CONVERTER FOR UNITED KINGDOM
2. PORTABLE HAND HELD, POWERED CORD FREE STRIPPER KIT WITH AND WITHOUT CUTTER HEAD(S), WITH OPTIONAL POWER SOURCES, SEE TABLE 2
1. ALL DIMENSIONS IN INCHES



TROMPETER RF connectivity a torch connectivity solutions brand	
MODEL: ACSY DATE: 6/1/06 BY: [Signature]	REFERENCE NO.: 14949 SCALE: N/A DATE: 10-1E-03