



# Network Infrastructure for the Enterprise

Preferred Parts – EMEA

**PANDUIT**<sup>™</sup>

# Network Infrastructure for the Enterprise

Today's enterprise IP networks support ever-expanding converged applications for voice, data, and video, as well as functions such as intelligent lighting, security, safety systems, and more.

Panduit Enterprise Networks provide the industry's most comprehensive and holistic portfolio of products and services that enable sustainable, energy-efficient enterprises. Innovative design features provide easy installation, reduced maintenance costs, and improved network reliability and flexibility.

This catalog features the most common offering for an enterprise physical infrastructure deployment. For the complete enterprise offering, please contact your local Panduit representative or visit us at <http://www.panduit.com/en/solutions/enterprise-solutions>.

## Table of Contents

|  |       |                                     |    |
|--|-------|-------------------------------------|----|
| Copper Cable .....                       | 3     | Racks, Shelves and Accessories..... | 8  |
| RJ45 Patch Cords .....                   | 3     | Cable Managers.....                 | 9  |
| RJ45 Jack Module.....                    | 4     | Zone Enclosures .....               | 9  |
| Patch Panels, Kits and Accessories ..... | 5     | Cabinets.....                       | 10 |
| Faceplates .....                         | 5 – 6 | Grounding .....                     | 10 |
| Fiber Optic Cable.....                   | 7     | Power Distribution Unit.....        | 10 |
| Fiber Connectors .....                   | 7     | Cable Ties.....                     | 10 |
| Fiber Patch Cords and Pigtails .....     | 7     | Labeling .....                      | 11 |
| Fiber Enclosures .....                   | 8     | Security Devices .....              | 11 |
| Fiber Adapter Panels.....                | 8     | Tools.....                          | 11 |



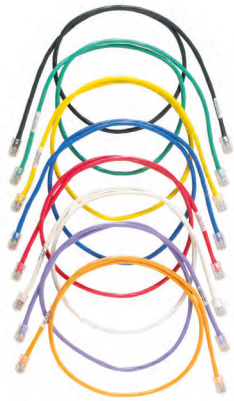
## Copper Cable



| Part Number           | Description   | UOM | MOQ (Reels) |
|-----------------------|---|-----|-------------|
| <b>Unshielded</b>     |   |     |             |
| <b>PUL5504WH-EY</b>   | Enhanced Category 5e, 4-pair, 24 AWG, UTP, LSZH, White.                 | M   | 24          |
| <b>PUL6004WH-EY</b>   | Enhanced Category 6, 4-pair, 23 AWG, UTP, LSZH, White.                  | M   | 18          |
| <b>PUL6C04BU-KE</b>   | Category 6, 4-pair, 24 AWG, UTP, LSZH, Blue.                            | M   | 30          |
| <b>PUL6AM04WH-CEG</b> | Category 6A Advanced MaTriX, 4-pair, 23 AWG, UTP, LSZH, White.          | M   | 18          |
| <b>PUL6ASD04WH-EG</b> | Enhanced Category 6A, small diameter, 4-pair, 26 AWG, UTP, LSZH, White. | M   | 18          |
| <b>Shielded</b>       |   |     |             |
| <b>PFL5504WH-KG</b>   | Category 5e, shielded, 4-pair, 23 AWG, F/UTP, LSZH, White.              | M   | 30          |
| <b>PFL6X04WH-CEG</b>  | Category 6A, shielded, 4-pair, 23 AWG, F/UTP, LSZH, White.              | M   | 18          |
| <b>PFFL6X04WH-CED</b> | Category 6A, shielded, 4-pair, 23 AWG, F/FTP, LSZH, White.              | M   | 12          |
| <b>PUFL6X04WH-KD</b>  | Category 6A, shielded, 4-pair, 23 AWG, U/UTP, LSZH, White.              | M   | 18          |
| <b>PSL7004WH-KD</b>   | Category 7, shielded, 4-pair, 23 AWG, S/FTP, LSZH, White.               | M   | 12          |

Note: F/UTP means Foil around Unshielded Twisted Pairs = shielded cable.  
LSZH means Low Smoke Zero Halogen.

## RJ45 Patch Cords<sup>‡</sup>



| Part Number                  | Description  | Std. Pkg. Qty. | Std. Ctn. Qty. |
|------------------------------|--|----------------|----------------|
| <b>Category 6A CM*</b>       |  |                |                |
| <b>UTP6ASD1M</b>             | Category 6A 26 AWG patch cord, CM, White, 1m.  | 1              | 10             |
| <b>Category 6A LSZH*</b>     |  |                |                |
| <b>UTP6ASDL1M</b>            | Category 6A (SD), patch cord, LSZH, White, 1m.   | 1              | 10             |
| <b>Category 6 LSZH*</b>      |  |                |                |
| <b>UTPSP1MY</b>              | Category 6, UTP, LSZH patch cord with TX6™ PLUS Modular Plugs on each end. White, 1 m.                                 | 1              | 10             |
| <b>Category 6 28 AWG*</b>    |  |                |                |
| <b>UTP28SP1M</b>             | Category 6, UTP, 28 AWG, patch cord with TX6™ Modular Plugs on each end. White, 1 m.                                   | 1              | 10             |
| <b>Cat 6A UTP Zone</b>       |  |                |                |
| <b>UZPLWH10M</b>             | Category 6A UTP, 23 AWG, zone cord LSZH, White, plug to plug, 10 m.  | 1              | 10             |
| <b>UZJLWH10MBL</b>           | Category 6A UTP, 23 AWG, zone cord LSZH, White, plug to black jack, 10 m.  | 1              | 10             |
| <b>Category 6A Shielded*</b> |  |                |                |
| <b>STP6X1MIG</b>             | Category 6A, 10 GbE UTP, LSZH shielded patch cord with TX6A™ 10Gig™ Modular Plugs on each end. International Gray, 1m. | 1              | 10             |
| <b>Patch Cord Bands</b>      |  |                |                |
| <b>PCBAND**-Q</b>            | Snaps onto individual patch cable for additional color-coding.   | 25             | 250            |

\*Patch cords shown in WH (White) or IG (International Gray). For BU (Blue) patch cords, add BU (Blue) to end of part number.  
Ex: UTP6ASD1MBU or STP6X3MBU.

‡Patch cords are available in 1m, 2m, 3m, or 5m (8 inch patch cord only available in UTP28SP8IN).  
For additional lengths, contact Customer Service.

**RJ45 Jack Module**



**CJ6X88TGBL**



**CJ688TGIW**



**CJS6X88TGY**

| Part Number         | Description   | Std. Pkg. Qty. | Std. Ctn. Qty. |
|---------------------|---|----------------|----------------|
| <b>Unshielded</b>   |   |                |                |
| <b>Category 6A</b>  |   |                |                |
| CJ6X88TGIW*         | Category 6A RJ45 UTP Mini-Com™ Jack, Off White.             | 1              | 50             |
| <b>Category 6</b>   |   |                |                |
| CJ688TGIW           | Category 6 RJ45 UTP Mini-Com™ Jack, International White.    | 1              | 50             |
| <b>Category 5e</b>  |   |                |                |
| CJ5E88TGRD          | Category 5e RJ45 UTP Mini-Com™ Jack, Red.                   | 1              | 50             |
| <b>Shielded</b>     |   |                |                |
| CJS6X88TGY          | Category 6A shielded RJ45 UTP Mini-Com™ Jack, Black module. | 1              | 50             |
| CJS688TGY           | Category 6 shielded RJ45 UTP Mini-Com™ Jack, Black module.  | 1              | 50             |
| CJS5E88TGY          | Category 5e shielded RJ45 UTP Mini-Com™ Jack, Black module. | 1              | 50             |
| <b>Modular Plug</b> |   |                |                |
| SP688-C             | Category 6, 24 AWG UTP modular plug.                        | 100            | 1000           |

\*RJ45 Jack Modules listed in IW (Off White). For other colors, replace IW with: BL (Black), BU (Blue), GR (Green), YL (Yellow), or RD (Red).

**Patch Panels, Kits, and Accessories**



**CP24BLY**



**CPA48BLY**



**CP48HDBL**



**CPP24FMWBL**



**CPP48HDWBL**



**CPPA48HDWBL**

| Part Number       | Description   | Std. Pkg. Qty. | Std. Ctn. Qty. |
|-------------------|---|----------------|----------------|
| <b>Shielded</b>   |   |                |                |
| CP24BLY           | 24-port all metal modular patch panel, 1 RU.  | 1              | 1              |
| CPA24BLY          | 24-port angled all metal modular patch panel, 1 RU.   | 1              | 1              |
| CP24WSBLY         | 24-port all metal modular patch panel with strain relief bar, 1 RU.   | 1              | 1              |
| CP48BLY           | 48-port all metal modular patch panel, 2 RU.  | 1              | 1              |
| CPA48BLY          | 48-port angled all metal modular patch panel, 2 RU.   | 1              | 1              |
| CP48WSBLY         | 48-port all metal modular patch panel with strain relief bar, 2 RU.   | 1              | 1              |
| CP48HDBL          | 48-port shielded high-density modular patch panel, 1 RU.  | 1              | 1              |
| CPA48HDBL         | 48-port angled shielded high-density modular patch panel, 1 RU.   | 1              | 1              |
| <b>Unshielded</b> |   |                |                |
| CPP24WBL          | 24-port patch panel supplied with six (6) factory installed CFFP4 type front removable snap-in faceplates.                        | 1              | 1              |
| CPPL24WBL         | 24-port patch panel with labels supplied with six (6) factory installed CFFP4 type front removable snap-in faceplates.            | 1              | 1              |
| CPP24FMWBL        | 24-port flush mount patch panel supplied with rear mounted faceplates.  | 1              | 1              |
| CPPLA24WBL        | 24-port angled patch panel with labels supplied with six (6) factory installed CFFP4 type front removable snap-in faceplates.     | 1              | 1              |
| CPPA24FMWBL       | 24-port angled flush mount patch panel supplied with rear mounted faceplates.   | 1              | 1              |
| CPPL48WBL         | 48-port patch panel with labels supplied with twelve (12) factory installed CFFP4 type front removable snap-in faceplates.        | 1              | 1              |
| CPP48FMWBL        | 48-port flush mount patch panel supplied with rear mounted faceplates.  | 1              | 1              |
| CPPLA48WBL        | 48-port angled patch panel with labels supplied with twelve (12) factory installed CFFP4 type front removable snap-in faceplates. | 1              | 1              |
| CPPA48FMWBL       | 48-port angled flush mount patch panel supplied with rear mounted faceplates.   | 1              | 1              |
| CPP48HDWBL        | 48-port high density patch panel supplied with rear mounted faceplates.   | 1              | 1              |
| CPPA48HDWBL       | 48-port angled high density patch panel supplied with rear mounted faceplates.  | 1              | 1              |

## Faceplates



CFPUKS2SAWY



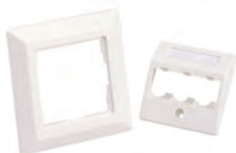
CFPUKS3AWY



CM6CSSAW-X



CM6CESSAW-X



CFPE3AWY

| Part Number              | Description  | Std. Pkg. Qty. | Std. Ctn. Qty. |
|--------------------------|--|----------------|----------------|
| <b>UK Faceplates</b>     |  |                |                |
| CFPUKS2SAWY              | 86mm x 86mm single gang faceplate frame and one 1/2-size sloped shuttered module insert.   | 1              | 1              |
| CFPUKS4SAW-2GY           | 86mm x 146mm double gang faceplate frame and two 1/2-sized sloped shuttered module inserts.  | 1              | 1              |
| CFPLUKF2SAW              | 86mm x 86mm single gang shuttered faceplate with label and icon slots. Accepts up to two Mini-Com™ Modules. Includes two M3.5-0.5x30mm panhead mounting screws.  | 1              | 1              |
| CFPLUKF4SAW              | 86mm x 86mm single gang shuttered faceplate with label and icon slots. Accepts up to four Mini-Com™ Modules. Includes two M3.5-0.5x30mm panhead mounting screws  | 1              | 1              |
| CFPUKS2BAWY              | 86mm x 86mm single gang faceplate holds up to two Mini-Com™ Modules. Supplied with CMB blank module.   | 1              | 1              |
| CFPUKS3AWY               | 86mm x 86mm single gang faceplate hold up to three Mini-Com™ Modules.  | 1              | 1              |
| CFP86S2AWY               | 86mm x 86mm single gang sloped faceplate with screw cover. Accepts two Mini-Com™ Modules.  | 1              | 1              |
| <b>UK Adapters</b>       |  |                |                |
| CM6CSAW-X                | Shuttered module snaps into standard UK LJU6C floor box mounting plates, faceplates and patch panels. Holds one Mini-Com™ Module. Compatible with standard UK LJU6C openings with 22.3mm x 36.9mm dimensions.        | 10             | 50             |
| CM6CSSAW-X               | Sloped shuttered module snaps into standard UK LJU6C floor box mounting plates, faceplates and patch panels. Holds one Mini-Com™ Module. Compatible with standard UK LJU6C openings with 22.3mm x 36.9mm dimensions. | 10             | 50             |
| CM6CESAW-X               | Shuttered Euro-mod adapter accepts one Mini-Com™ Module (25mm x 50mm).   | 10             | 50             |
| CM6CESSAW-X              | Sloped shuttered Euro-mod adapter accepts one Mini-Com™ Module (25mm x 50mm).  | 10             | 50             |
| <b>German Faceplates</b> |  |                |                |
| CFPE3AWY                 | 80mm x 80mm faceplate frame and one 55mm x 55mm sloped faceplate accepts up to three Mini-Com™ Modules. Supplied with mounting screws, metal mounting plate, label and label cover.                                  | 1              | 1              |
| CFPAGS2AWY               | 50mm x 50mm adapter and one 1/2-size sloped module insert accepts up to two Mini-Com™ Modules. Supplied with mounting screws and metal mounting plate.   | 1              | 1              |
| CFPAGS2SAWY              | 50mm x 50mm adapter and one 1/2-size sloped shuttered module insert accepts up to two Mini-Com™ Modules. Supplied with mounting screws and metal mounting plate.   | 1              | 1              |
| CHES3AWY                 | 55mm x 55mm sloped faceplate holds up to three Mini-Com™ Modules. Supplied with mounting screws, metal mounting plate, label and label cover.  | 1              | 1              |
| FCFPAW                   | 80mm x 80mm faceplate frame accepts all Panduit 50mm x 50mm adapters and the CHES3AWY adapter.   | 1              | 1              |

(continued on page 6)

Faceplates (continued)



CFPFF2AW



CFPFLS1SAW



CFPH4AW



CBTAL1WH-X

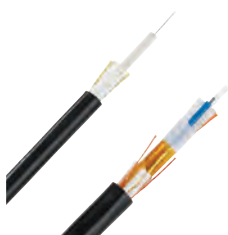


CFPDPS2SEW

| Part Number               | Description  | Std. Pkg. Qty. | Std. Ctn. Qty. |
|---------------------------|--|----------------|----------------|
| <b>French Faceplates</b>  |  |                |                |
| CFPFF2AW                  | 45mm x 45mm adapter with one 1/2-size flat module insert accepts two Mini-Com™ Modules.  | 1              | 1              |
| CFPFS2AW                  | 45mm x 45mm adapter with one 1/2-size sloped module insert accepts two Mini-Com™ Modules.  | 1              | 1              |
| CFPFS2SAW                 | 45mm x 45mm adapter with one 1/2-size sloped shuttered module insert accepts up to two Mini-Com™ Modules.  | 1              | 1              |
| CFPFLS1SAW                | 45mm x 45mm adapter with one-port sloped shuttered module with labels and icon slots. Accepts a single Mini-Com™ Module.   | 1              | 1              |
| CFPFLS2SAW                | 45mm x 45mm adapter with two-port sloped shuttered module with labels and icon slots. Accepts up to two Mini-Com™ Modules.   | 1              | 1              |
| CFP45LS2SAW               | 45mm x 45mm adapter with one 1/2-size sloped shuttered module insert with label and label cover. Accepts up to two Mini-Com™ Modules.                                      | 1              | 1              |
| <b>French Adapter</b>     |  |                |                |
| CFA1SAW-X                 | Accepts a single Mini-Com™ Module, 22.5mm x 45mm shuttered adapter.  | 10             | 50             |
| <b>Italian Faceplates</b> |  |                |                |
| CFPH2IW                   | Single gang horizontal faceplate accepts two Mini-Com™ Modules.  | 1              | 1              |
| CFPHS2IW                  | Single gang, sloped horizontal faceplate accepts two Mini-Com™ Modules.  | 1              | 1              |
| CFPH4IW                   | Single gang horizontal faceplate accepts four Mini-Com™ Modules.   | 1              | 1              |
| CFPHSL4IW                 | Single gang sloped horizontal faceplate accepts four Mini-Com™ Modules. Includes label and label cover.  | 1              | 1              |
| <b>Italian Adapters</b>   |  |                |                |
| CGAGY-X                   | Adapter holds one Mini-Com™ Module in a Gewiss Playbus* Series Faceplate.  | 10             | 50             |
| CBTAL1BL-X                | Adapter label pocket accepts one Mini-Com™ Module for Bticino** Living International series faceplates.  | 10             | 50             |
| CBTA1BL-X                 | Adapter accepts one Mini-Com™ Module for Bticino** Living International series faceplates.   | 10             | 50             |
| CBTAL1WH-X                | Adapter with label pocket accepts one Mini-Com™ Module for Bticino** Light series faceplates.  | 10             | 50             |
| CBTA1WH-X                 | Adapter accepts one Mini-Com™ Module for Bticino** Light series faceplates.  | 10             | 50             |
| <b>Denmark Faceplates</b> |  |                |                |
| CFPDS2SEWY                | Danish 77.1mm x 50.4mm faceplate with one 1/2-size sloped shuttered module insert holds up to two Mini-Com™ Modules. Supplied with label and label cover.                  | 1              | 10             |
| CFPDPS2SEW                | Denmark faceplate with one 1/2-size sloped shuttered insert holds up to two Mini-Com™ Modules. Supplied with label and label cover.  | 1              | 10             |
| CHLKCLS2SEW               | Mini-Com™ Faceplate for use with LK Clic'Line^ Series faceplate snaps to LK back box. Includes one 1/2-size sloped shuttered insert that hold up to two Mini-Com™ Modules. | 1              | 10             |
| CFD66S2SEW                | Mini-Com™ 2-position Sloped Shuttered OPUS 66^^ Adapter holds up to two Mini-Com™ Modules. Compatible with in-wall and surface mount installations.                        | 1              | 10             |

\*Playbus is a trademark of Gewiss S.p.  
 \*\*Living International and Light are trademarks of Bticino S.p.A.  
 ^Clic'Line is a trademark of Schneider Electric.  
 ^^OPUS 66 is a trademark of Schneider Electric.

## Fiber Optic Cable



FPCL\*\*\*  
FQCL\*\*\*

| Part Number                 | Description  | UOM | MOQ  |
|-----------------------------|--|-----|------|
| <b>Indoor/Outdoor Cable</b> |  |     |      |
| FPCL912                     | 12-fiber OS2 singlemode LSZH indoor/outdoor cable.       | M   | 1000 |
| FPCL924                     | 24-fiber OS2 singlemode LSZH indoor/outdoor cable.       | M   | 1000 |
| FQCLX08                     | 8-fiber OM3 10 GbE multimode LSZH indoor/outdoor cable.  | M   | 1000 |
| FQCLX122                    | 12-fiber OM3 10 GbE multimode LSZH indoor/outdoor cable. | M   | 1000 |

## Fiber Connectors



FLCSMCXAQY



FSCSCBU

| Part Number                               | Description  | Std. Pkg. Qty. | Std. Ctn. Qty. |
|---|--|----------------|----------------|
| <b>OptiCam™ Pre-Polished Connectors</b>   |  |                |                |
| FLCSMCXAQY                                | LC 50/125µm OM3/OM4 multimode simplex connector, Aqua boot.    | 1              | 10             |
| FLCSMCBUY                                 | LC 9/125µm singlemode simplex fiber optic connector for 900µm. | 1              | 10             |
| <b>OptiCam™ Field Polished Connectors</b> |  |                |                |
| FSCMCXAQ                                  | SC 50/125µm OM2/OM3/OM4 duplex connector, Aqua boot.           | 1              | 10             |
| FSCSCBU                                   | SC 9/125µm OS2 singlemode simplex connector, Blue boot.        | 1              | 10             |

## Fiber Patch Cords and Pigtails



FX2ELLNLNSNM\*\*\*



FX1BN1NNNSNM001

| Part Number                               | Description   | Std. Pkg. Qty. | Std. Ctn. Qty. |
|---|---|----------------|----------------|
| <b>Opti-Core™ Fiber Optic Patch Cords</b> |   |                |                |
| FX2ELLNLNSNM002                           | 2-fiber OM3 10 GbE LC duplex to LC duplex patch cord, LSZH, 1.6mm jacketed cable, 2m. | 1              | 10             |
| FX2ELLNLNSNM003                           | 2-fiber OM3 10 GbE LC duplex to LC duplex patch cord, LSZH, 1.6mm jacketed cable, 3m. | 1              | 10             |
| F92ELLNLNSNM002                           | 2-fiber OS2 LC duplex to LC duplex patch cord, LSZH, 1.6mm jacketed cable, 2m.        | 1              | 10             |
| F92ELLNLNSNM003                           | 2-fiber OS2 LC duplex to LC duplex patch cord, LSZH, 1.6mm jacketed cable, 3m.        | 1              | 10             |
| FX23LSNSNSNM002                           | 2-fiber OM3 10 GbE SC duplex to SC duplex patch cord, LSZH, 3mm jacketed cable, 2m.   | 1              | 10             |
| FX23LSNSNSNM003                           | 2-fiber OM3 10 GbE SC duplex to SC duplex patch cord, LSZH, 3mm jacketed cable, 3m.   | 1              | 10             |
| F923LSNSNSNM002                           | 2-fiber OS2 SC duplex to SC duplex patch cord, LSZH, 3mm jacketed cable, 2m.          | 1              | 10             |
| F923LSNSNSNM003                           | 2-fiber OS2 SC duplex to SC duplex patch cord, LSZH, 3mm jacketed cable, 3m.          | 1              | 10             |
| FX2ELLNLNSNM005                           | 2-fiber OM3 10 GbE LC duplex to LC duplex patch cord, LSZH, 1.6mm jacketed cable, 5m. | 1              | 10             |
| FX1BN1NNNSNM001                           | 1-fiber OM3, 900µm buffered fiber, LC to pigtail with no jacket, 1m.                  | 1              | 10             |
| F91BN1NNNSNM001                           | 1-fiber OS2, 900µm buffered fiber, LC to pigtail with no jacket, 1m.                  | 1              | 10             |

Length in meters. 1, 2, 3, 5, and 10 meter lengths. Contact Panduit customer service for additional lengths.

**Fiber Enclosures**



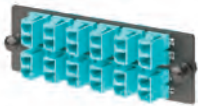
FMT1



FMT1A

| Part Number | Description                        | Std. Pkg. Qty. | Std. Ctn. Qty. |
|-------------|------------------------------------|----------------|----------------|
| FMT1        | 1 RU Rack Mount Fiber Tray.        | 1              | 1              |
| FMT1A       | 1 RU Angled Rack Mount Fiber Tray. | 1              | 1              |

**Fiber Adapter Panels**



FAP12WAQDLCZ

| Part Number                 | Description  | Std. Pkg. Qty. | Std. Ctn. Qty. |
|-----------------------------|--|----------------|----------------|
| <b>Fiber Adapter Panels</b> |  |                |                |
| FAP12WAQDLCZ                | LC OM3/OM4 FAP with twelve LC 10 GbE duplex multimode fiber optic adapters (Aqua) with zirconia ceramic split sleeves. | 1              | 1              |
| FAP12WBUDLCZ                | LC OS2 FAP with twelve LC duplex singlemode fiber optic adapters (Blue) with zirconia ceramic split sleeves.           | 1              | 1              |
| FAPB                        | Blank FAP  | 1              | 1              |

**Racks, Shelves and Accessories**



R4PCN



CUFMB24BL



RM19FM1

| Part Number             | Description  | Std. Pkg. Qty. | Std. Ctn. Qty. |
|-------------------------|--|----------------|----------------|
| <b>Racks</b>            |  |                |                |
| R2P                     | 2 post rack, 45 RU, with threaded rails.   | 1              | 1              |
| R4PCN                   | 4 post rack, 45 RU with cage nut rails, 760mm deep.  | 1              | 1              |
| <b>Rack Accessories</b> |  |                |                |
| S1224-C                 | #12-24 screws.   | 100            | 1000           |
| CNWS1224-C              | #12-24 cage nut with screws.   | 100            | 1000           |
| CNWSM6-C                | M6 cage nut with screws.   | 100            | 1000           |
| R2PPDUB                 | PDU mounting kit, suits 2 post rack and 4 post rack.   | 1              | 1              |
| TLBP1S-V                | Tool-less blanking panel, 1 RU, suit cage nut holes.   | 5              | 5              |
| CPAF1BLY                | Blanking panel, angled, 1 RU.  | 1              | 1              |
| PZLRB4U                 | 4 RU ladder rack bracket. Bracket fits Wyr-Grid® Overhead Cable Tray.                                | 1              | 1              |
| CUFMB24BL               | Raised floor consolidation point enclosure, accepts Mini-Com® Modules, with removable grommet plate. | 1              | 1              |
| NVPDUB                  | PDU brackets for switch cabinet (pack of 2).   | 1              | 1              |
| SRB19BLY                | Strain relief bar, extended 2".  | 1              | 1              |
| CMPHF1                  | 1 RU horizontal panel d-rings, front only.   | 1              | 1              |
| CMPHHF1                 | 1 RU horizontal panel d-rings, high density, front only.   | 1              | 1              |
| <b>Shelves</b>          |  |                |                |
| SRM19FM1                | 1 RU front mount shelf, 480mm deep.  | 1              | 1              |
| RSHLF                   | 1 RU front and rear mount shelf, 760mm deep.   | 1              | 1              |



## Cable Managers



| Part Number                | Description  | Std. Pkg. Qty. | Std. Ctn. Qty. |
|----------------------------|--|----------------|----------------|
| <b>Vertical Managers</b>   |  |                |                |
| WMPV45E                    | NetRunner™ Vertical Cable Manager, front and rear, 45 RU, 4"x 5".          | 1              | 10             |
| WMPVHC45E                  | NetRunner™ Vertical Cable Manager, front and rear, 45 RU, 6" x 6".         | 1              | 10             |
| PRVF6                      | PatchRunner™ Vertical Cable Manager, front only 6 inch.                    | 1              | —              |
| PRV8                       | PatchRunner™ Vertical Cable Manager, front and rear 8 inch.                | 1              | —              |
| PRV12                      | PatchRunner™ Vertical Cable Manager front and rear 12 inch.                | 1              | —              |
| <b>Doors</b>               |  |                |                |
| PRD8                       | PatchRunner™ 8 Inch (203mm) Dual Hinge Door for 84 inches high.            | 1              | —              |
| PRD12                      | PatchRunner™ 12 Inch (305mm) Dual Hinge Door.                              | 1              | 1              |
| <b>Horizontal Managers</b> |  |                |                |
| WMPFSE                     | PatchLink™ Horizontal Cable Manager, front only, 1 RU.                     | 1              | 1              |
| WMP1E                      | Horizontal cable manager front and rear, 2 RU.                             | 1              | 1              |
| WMPF1E                     | Horizontal cable manager front only, 2 RU.                                 | 1              | 1              |
| NCMHAEF2                   | 2 RU high capacity horizontal cable manager with hinged cover, front only. | 1              | 1              |
| NCMHF1                     | 1 RU horizontal cable manager with hinged cover, front only                | 1              | 1              |
| NMF2                       | 2 RU horizontal cable manager with hinged cover, front only.               | 1              | 1              |

## Zone Enclosures



| Part Number | Description  | Std. Pkg. Qty. | Std. Ctn. Qty. |
|-------------|--|----------------|----------------|
| PZAEWM3     | PanZone™ Active Wall Mount Enclosure, includes mounting template for quick installation.   | 1              | —              |
| PZICEE      | Economical passive in-ceiling zone cabling enclosure. Accepts up to 8 RU of standard 19" patch panels. Includes mounting brackets and integrated horizontal slack manager. White. 23.50"H x 23.50"W x 13.43"D (596.9mm x 596.9mm x 341.1mm). | 1              | —              |
| PZLRB4U     | 4 RU ladder rack bracket. Bracket fits Wyr-Grid™ Overhead Cable Tray.  | 1              | 1              |

**Cabinets**



N8212BC



S8212BA

| Part Number | Description  | Std. Pkg. Qty. | Std. Ctn. Qty. |
|-------------|--|----------------|----------------|
| N8212BC     | Net-Access™ N-Type Cabinet frame with top panel. Dimensions: 78.8"H x 31.5"W x 42.0"D (2000mm x 800mm x 1067mm). Color: Black. | 1              | 1              |
| N8512BC     | Net-Access™ N-Type Cabinet frame with top panel. Dimensions: 84.0"H x 31.5"W x 42.0"D (2134mm x 800mm x 1067mm). Color: Black. | 1              | 1              |
| N8822BC     | Net-Access™ N-Type Cabinet frame with top panel. Dimensions: 88.5"H x 31.5"W x 48.0"D (2205mm x 800mm x 1219mm). Color: Black. | 1              | 1              |
| S8212BA     | Net-Access™ S-Type Cabinet frame with top panel. Dimensions: 79.8"H x 42.0"W x 42.0"D (2026mm x 800mm x 1067mm). Color: Black. | 1              | 1              |
| S8522BA     | Net-Access™ S-Type Cabinet frame with top panel. Dimensions: 85.0"H x 31.5"W x 48.0"D (2160mm x 800mm x 1219mm). Color: Black. | 1              | 1              |

**Grounding**



CNBK



RGCBNJ660P22

| Part Number  | Description  | Std. Pkg. Qty. | Std. Ctn. Qty. |
|--------------|--|----------------|----------------|
| CNBK         | Bonding cage nut kit.  | 1              | —              |
| RGCBNJ660P22 | Jumper kits, Common Bonding Network (CBN), #6 AWG (16mm <sup>2</sup> ) jumper, 60" (1.52m) length. | 1              | —              |
| RGTBSG-C     | Green thread-forming bonding screw, #12-24 x 1/2".   | 100            | 1000           |

**Power Distribution Unit**



HB0D2J0AA10M1

| Part Number   | Description   | Std. Pkg. Qty. | Std. Ctn. Qty. |
|---------------|---|----------------|----------------|
| HB0D2J0AA10M1 | Horizontal power strip with a 16 A, 230V, 10 IEC C-13 receptacles, with C-20 power inlet, retaining clamp included. CE Marked | 1              | 1              |
| VB0D2J0AA20M1 | Vertical power strip with a 16 A, 230V, 20 IEC C-13 receptacles, with C-20 power inlet. CE Marked                             | 1              | 1              |

**Cable Ties**



HLS



PLT

| Part Number | Description  | Std. Pkg. Qty. | Std. Ctn. Qty. |
|-------------|--|----------------|----------------|
| HLS-75R0    | Hook and loop roll, 75'L (22.9m), 0.75"W (19.1mm), Black.                            | 1              | 10             |
| HLS-15R0    | Hook and loop roll, 15'L (4.6m), 0.75"W (19.1mm), Black.                             | 1              | 10             |
| TTS-35RX0   | Hook and loop roll, 10 roll pack, low profile, 35'L (10.7m), 0.75"W (19.1mm), Black. | 1              | 10             |
| PLT3I-C     | Cable tie, 11.4"L (290mm), Intermediate, nylon, Natural.                             | 100            | 1000           |
| PLT3S-C2    | Cable tie, 11.5"L (292mm) Standard, nylon, Red.                                      | 100            | 1000           |
| PLT8LH-C0   | Cable tie, 27.6"L (701mm), Light-Heavy, weather resistant, Black.                    | 100            | 2000           |
| PLT4S-M30   | Cable tie, 14.5"L (368mm), Standard, heat stabilized, Black.                         | 1000           | 10000          |
| PLT3S-M2    | Cable tie, 11.5"L (292mm) Standard, nylon, Red.                                      | 1000           | 10000          |
| PLT4I-M     | Cable tie, 14.5"L (368mm), Intermediate, nylon, Natural.                             | 1000           | 10000          |

## Labeling



LS8EQ-KIT



R100X150V1C

| Part Number | Description   | Std. Pkg. Qty. | Std. Ctn. Qty. |
|-------------|---|----------------|----------------|
| LS8EQ-KIT   | Panduit® PanTher™ Hand-Held Label Printing System in kit. Includes LS8EQ printer with QWERTY keypad, one cassette of S100X150VAC self-laminating labels, six AA alkaline batteries, LS8E-ACS, LS8-CASE, LS8-PCKIT, LS8-IB, LS8-WS, quick reference card and operator's manual. USE FOR LABELS THAT MUST BE PRINTED ON THE JOB SITE. | 1              | 1              |
| UILS8BW     | Ultimate ID™ Label Cassette.  | 1              | 10             |
| C252X030FJC | Modular patch panel (CP) adhesive label cassette.   | 1              | 10             |
| S100X150VAC | P1 cassette, self-laminating label, vinyl, 1.00" W x 1.50" H, 0.50" POA, Clear/White.   | 1              | 10             |
| R100X150V1C | Turn-Tell™ Patch Cord Label Cassette.   | 1              | 10             |

## Security Devices



PSL-LCAB-AQ



FLCCLIW-X



PSL-DCJB



PSL-DCPLRX

| Part Number   | Description   | Std. Pkg. Qty. | Std. Ctn. Qty. |
|---------------|---|----------------|----------------|
| PSL-LCAB-AQ   | LC duplex adapter blockout device, ten devices (Blue) and one removal tool (Aqua).                | 1              | 20             |
| PSL-LCAB-BU   | LC duplex adapter blockout device, ten devices (Blue) and one removal tool (Black).               | 1              | 20             |
| FLCCLIW-X     | LC patch plug lock-in device, ten devices and one removal tool.                                   | 10             | 100            |
| PSL-DCJB-BL   | Jack module blockout device, ten block-outs (Black) and one removal tool (Black).                 | 1              | 20             |
| PSL-DCJB-BU   | Jack module blockout device, ten block-outs (Blue) and one removal tool (Black).                  | 1              | 20             |
| PSL-DCJB      | Jack module blockout device, ten block-outs (Red) and one removal tool (Black).                   | 1              | 20             |
| PSL-DCPLRX-BL | Recessed RJ45 plug lock-in device, ten devices (Black) and one installation/removal tool (Black). | 1              | 20             |
| PSL-DCPLRX-BU | Recessed RJ45 plug lock-in device, ten devices (Blue) and one installation/removal tool (Black).  | 1              | 20             |
| PSL-DCPLRX    | Recessed RJ45 plug lock-in device, ten devices (Red) and one installation/removal tool (Black).   | 1              | 20             |

## Tools



EGJT



TGJT



FCAMKIT

| Part Number | Description   | Std. Pkg. Qty. | Std. Ctn. Qty. |
|-------------|---|----------------|----------------|
| EGJT        | TG jack termination tool.   | 1              | —              |
| TGJT        | TG jack termination tool, for high-volume installations.                  | 1              | —              |
| CJAST       | Copper cable jacket stripper.   | 1              | 1              |
| CWST        | Copper wire snips.  | 1              | 1              |
| PDT110      | 110 punchdown tool.   | 1              | 1              |
| CBOT24K     | Cable bundle organizing tool.   | 1              | 10             |
| FIELDKIT    | Field polish fiber optic termination kit for all field polish connectors. | 1              | —              |
| FCAMKIT     | OptiCam™ Termination Kit for pre-polished connectors.                     | 1              | 1              |
| MPT5-8AS    | Crimp tool for TX6™ PLUS and Pan-Plug™ Modular Plugs.                     | 1              | 1              |



**PANDUIT™**

Panduit CBC London  
6 Broad Street Place  
London  
EC2M 7JH  
UK

phone +44 (0) 208 601 7200

[EMEA-CustomerServices@panduit.com](mailto:EMEA-CustomerServices@panduit.com)

[www.panduit.com](http://www.panduit.com)