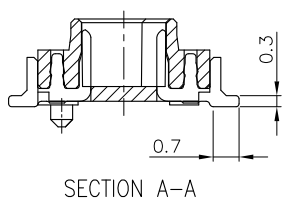


- NOTES:
- MATERIAL:
 HOUSING: PA6T, UL94 V-0, NATURAL COLOR.
 CONTACTS: PHOSPHOR BRONZE.
 PEGS: BRASS.
 - FINISH:
 CONTACTS: (SEE TABLE)
 PLATING B: GOLD FLASH ON ENTIRE CONTACT.
 PLATING C: 100μ" MIN. MATTE-TIN ON ENTIRE CONTACT.
 (WITH ENTIRE CONTACT UNDERPLATED 50μ" MIN. NICKEL.)
 PEGS: 100μ" MIN. TIN OR MATTE-TIN OVER 50μ" MIN. NICKEL.
 - PART NUMBER OF MATING RECEPTACLE: X-1775013-X
 - REFLOW SOLDER CAPABLE TO 260°C AS PER
 TEC-109-201, CONDITION B.

CAP OR MYLAR	CONTACT PLATING	WEIGHT (GRAMS)	DIMENSIONS						NO. OF CONTACTS	PART NUMBER
			E	D	C	B	A			
CAP	C	0.155	8	9	6.25	5.6	4.0	12	5-1775014-4	
MYLAR	B	0.236	15.2	16.2	13.45	12.8	11.2	30	5-1775014-2	
		0.298	19.2	20.2	17.45	16.8	15.2	40	4-1775014-0	
MYLAR	C	0.236	15.2	16.2	13.45	12.8	11.2	30	3-1775014-0	
		0.199	12.8	13.8	11.05	10.4	8.8	24	2-1775014-4	
N/A	C	0.125	8	9	6.25	5.6	4.0	12	1-1775014-2	
		0.29	19.2	20.2	17.45	16.8	15.2	40	1775014-8	
MYLAR	B	0.23	15.2	16.2	13.45	12.8	11.2	30	1775014-7	
		0.19	12.8	13.8	11.05	10.4	8.8	24	1775014-6	
MYLAR	B	0.12	8	9	6.25	5.6	4.0	12	1775014-5	
		0.298	19.2	20.2	17.45	16.8	15.2	40	1775014-4	
MYLAR	B	0.236	15.2	16.2	13.45	12.8	11.2	30	1775014-3	
		0.199	12.8	13.8	11.05	10.4	8.8	24	1775014-2	
MYLAR	B	0.125	8	9	6.25	5.6	4.0	12	1775014-1	

5. SUBSTANCE RESTRICTIONS FOR LOW HALOGEN (BY WEIGHT):
 BROMINE (Br) ≤ 900 PPM (0.09%)
 CHLORINE (Cl) ≤ 900 PPM (0.09%)
 TOTAL CONCENTRATION OF (Cl) + (Br) ≤ 1500 PPM (0.15%)



THIS DRAWING IS A CONTROLLED DOCUMENT.

DIMENSIONS: MM TOLERANCES UNLESS OTHERWISE SPECIFIED:
 0 PLC ± -
 1 PLC ± 0.3
 2 PLC ± 0.2
 3 PLC ± 0.15
 4 PLC ± -
 ANGLES ± -

MATERIAL SEE NOTE FINISH SEE NOTE

DWN A. WU 05FEB2013
 CHK S. CHIEN 05FEB2013
 APVD W. KODAMA 05FEB2013
 PRODUCT SPEC 108-57488
 APPLICATION SPEC -
 WEIGHT SEE TABLE
 CUSTOMER DRAWING

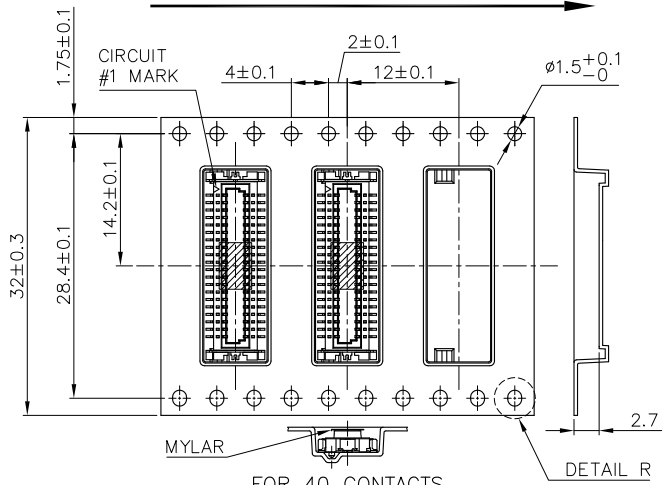
NAME BOARD TO BOARD CONNECTOR, 0.8mm PITCH, FINE-STACK, 3H, PLUG
 SIZE A3 CAGE CODE 00779 DRAWING NO. C-1775014 RESTRICTED TO -
 SCALE - SHEET 1 OF 2 REV E

TE Connectivity

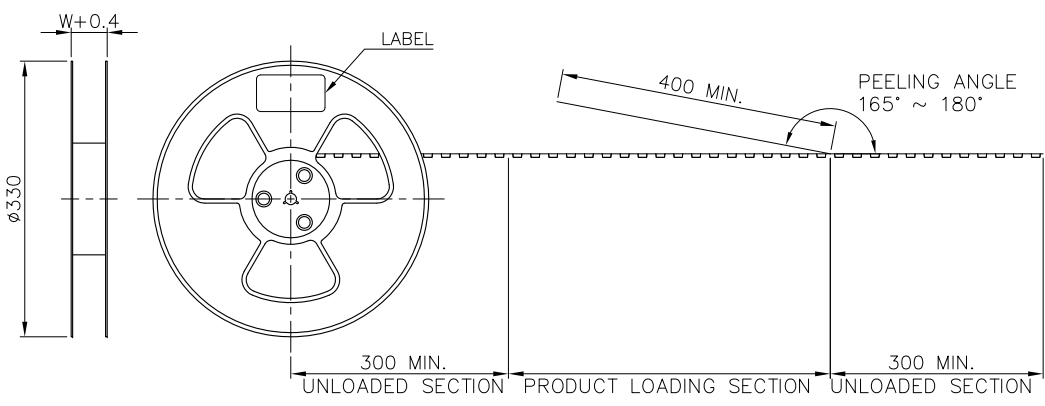
THIS DRAWING IS UNPUBLISHED. RELEASED FOR PUBLICATION
 © COPYRIGHT 2013 BY TE CONNECTIVITY. ALL RIGHTS RESERVED.

LOC DW	DIST -	REVISIONS			DATE	DWN	APVD
P	LTR	DESCRIPTION					
		SEE SHEET 1					

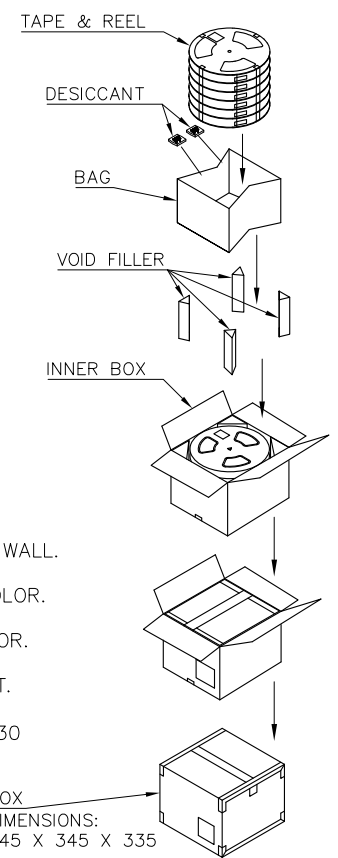
USER DIRECTION OF UNREELING →



FOR 40 CONTACTS
(WITH OR WITHOUT MYLAR)



DETAIL R
4:1

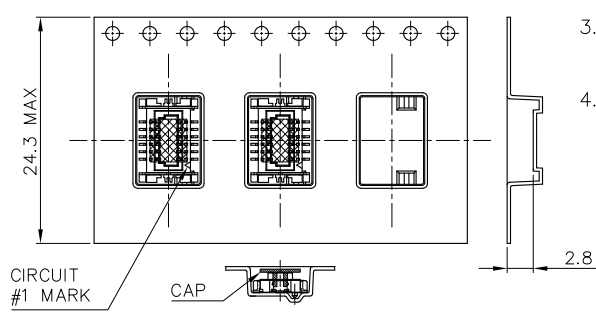


NOTES:

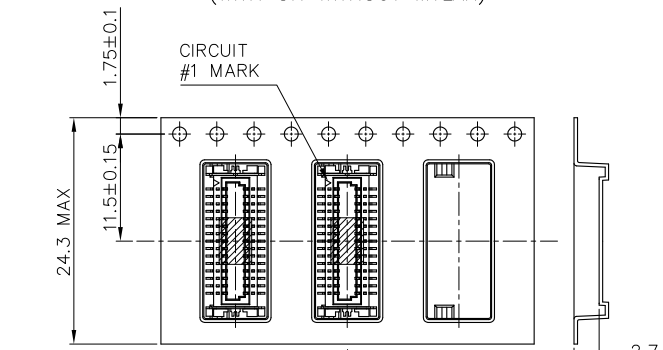
- MATERIAL:
BOX: FIBREBOARD, CORRUGATED, DOUBLE WALL.
COVER TAPE: PET, TRANSPARENT COLOR.
CARRIER TAPE: POLYSTYRENES, BLACK COLOR.
REEL: HIPS, BLUE COLOR.
BAG: POLYETHYLENES, TRANSPARENT COLOR.
- EACH BAG SHALL BE INCLUDED DESICCANT.
- PEELING STRENGTH: 0.1 ~ 1.3 N (10 ~ 130 GRAMS).
- PEELING SPEED: 300 mm/min.

BOX DIMENSIONS:
345 X 345 X 335

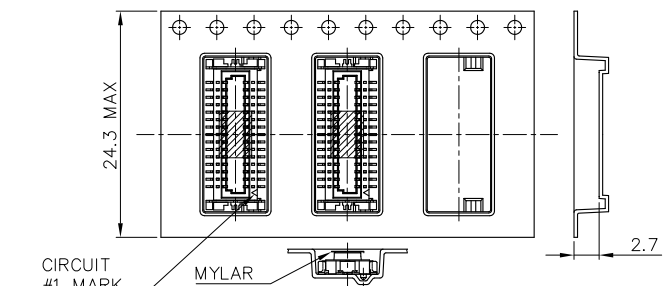
USER DIRECTION OF UNREELING →



FOR 5-1775014-4 ONLY



FOR 12, 24 & 30 CONTACTS
(WITH OR WITHOUT MYLAR)



FOR 5-1775014-2 ONLY

12000	1500	8	12.35	4.85	40
15000	1500	10	11.2	3.9	30
15000	1500	10	10.12	3.25	24
15000	1500	10	9.25	2.35	12
QUANTITY	PCS /TAPE	REELS /BOX	G/W (Kg)	N/W (Kg)	NO. OF CONTACTS

THIS DRAWING IS A CONTROLLED DOCUMENT.

DIMENSIONS: MM	TOLERANCES UNLESS OTHERWISE SPECIFIED:	DWN	-
0 PLC	±	CHK	-
1 PLC	±	APVD	-
2 PLC	±	NAME	-
3 PLC	±	PRODUCT SPEC	-
4 PLC	±	APPLICATION SPEC	-
ANGLES	±	SIZE	A3
MATERIAL	FINISH	CAGE CODE	00779
		DRAWING NO	C=1775014
		RESTRICTED TO	-
		WEIGHT	-
		CUSTOMER DRAWING	SCALE -
			SHEET 2 of 2
			REV E

STE TE Connectivity

BOARD TO BOARD CONNECTOR,
0.8mm PITCH, FINE-STACK,
3H, PLUG