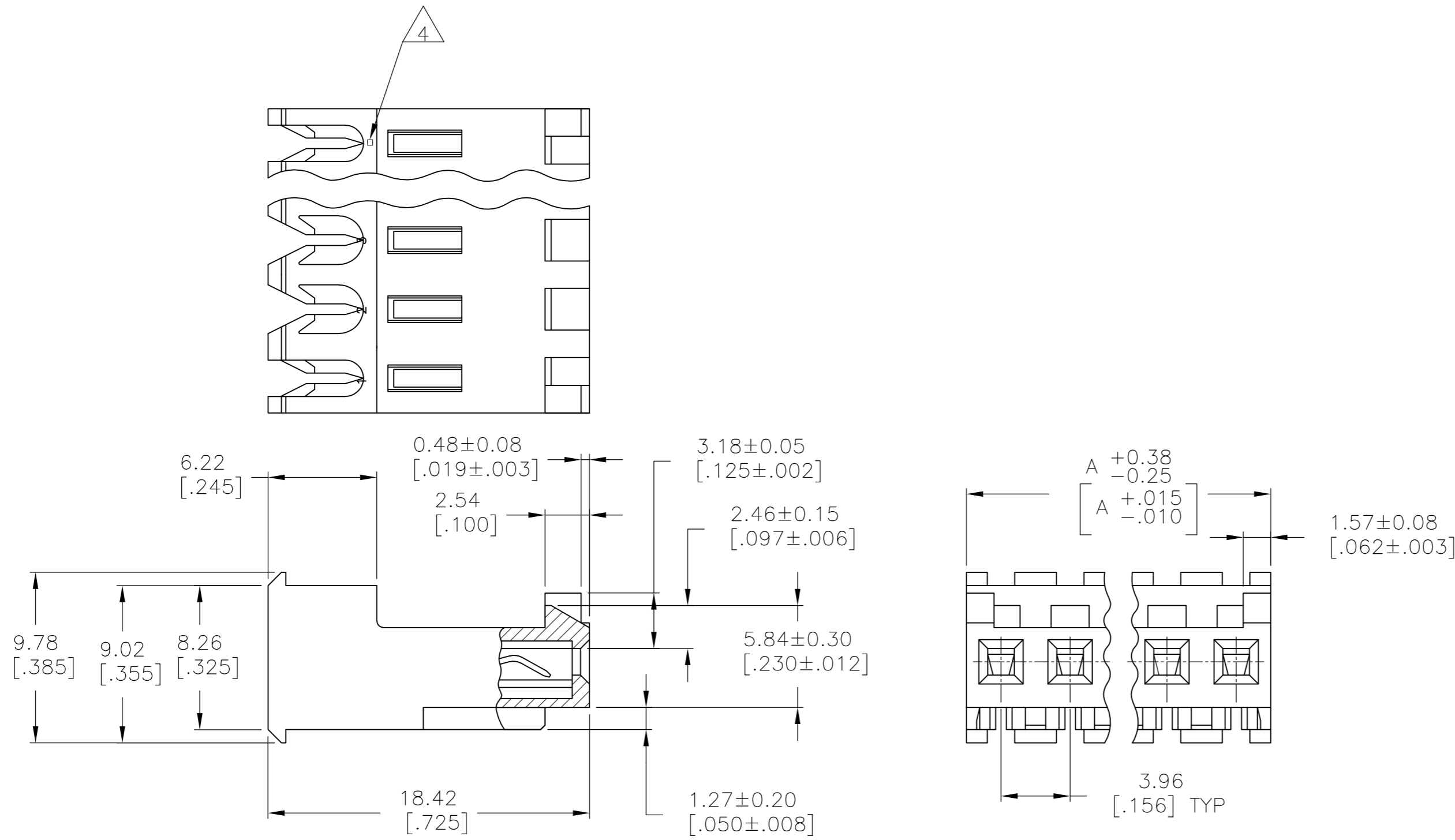


THIS DRAWING IS UNPUBLISHED. RELEASED FOR PUBLICATION
 © COPYRIGHT - By - ALL RIGHTS RESERVED.

LOC	DIST	REVISIONS					
CM	00	P	LTR	DESCRIPTION	DATE	DWN	APVD
		D		REVISED PER ECO-12-007612	03AUG12	KH	SM



1 MATERIAL: CONNECTOR - NYLON UL94V-2.
 CONTACTS - 0.30[.012] THICK COPPER ALLOY
 0.00076[.000030] GOLD THK OR 0.00008[.000003] MIN THK
 GOLD FLASH OVER 0.00068[.000027] THK PALLADIUM NICKEL,
 PER TE CONNECTIVITY'S DISCRETION, IN CONTACT
 AREA WITH BRIGHT TIN-LEAD FOR 644720-2 THRU
 1-644720-4, MATTE WHISKER MITIGATED TIN FOR
 3-644720-2 THRU 4-644720-4 OVER NICKEL
 UNDERPLATE.

2 CONTACTS ACCEPT 22 AWG WIRE WITH 2.41[.095] MAX INSULATION DIAMETER.

3 CONTACTS MUST ACCEPT 1.14±0.03[.045±.001] SQUARE POST AND REMAIN LOCKED IN POSITION.

4 IDENTIFICATION NUMBER FOR LAST CIRCUIT MAY NOT APPEAR ON ALL ASSEMBLIES.

5 DIMENSIONS IN BRACKETS ARE IN INCHES.

6 HOUSING FEATURES ARE: FEED-THRU WITH LOCKING RAMP AND POLARIZING TAB.

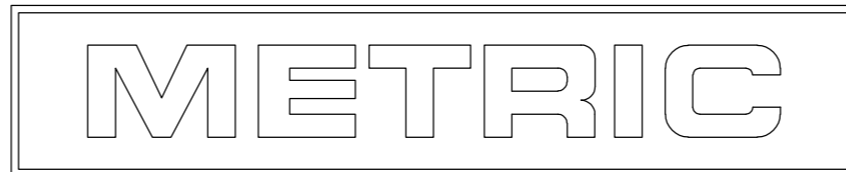
7 OBSOLETE PARTS: OBSOLETE CIS STREAMLINING PER D.RENAUD/D.SINISI

8 RED COLOR STRIPE ON HOUSING (NOT SHOWN) MAY RUN DOWN BETWEEN RIBS.

55.47 [2.184]	14	4-644720-4
51.51 [2.028]	13	4-644720-3
47.55 [1.872]	12	4-644720-2
43.59 [1.716]	11	4-644720-1
39.62 [1.560]	10	4-644720-0
35.66 [1.404]	9	3-644720-9
31.70 [1.248]	8	3-644720-8
27.74 [1.092]	7	3-644720-7
23.77 [.936]	6	3-644720-6
19.81 [.780]	5	3-644720-5
15.85 [.624]	4	3-644720-4
11.89 [.468]	3	3-644720-3
7.92 [.312]	2	3-644720-2
55.47 [2.184]	14	1-644720-4
51.51 [2.028]	13	1-644720-3
47.55 [1.872]	12	1-644720-2
43.59 [1.716]	11	1-644720-1
39.62 [1.560]	10	1-644720-0
35.66 [1.404]	9	644720-9
31.70 [1.248]	8	644720-8
27.74 [1.092]	7	644720-7
23.77 [.936]	6	644720-6
19.81 [.780]	5	644720-5
15.85 [.624]	4	644720-4
11.89 [.468]	3	644720-3
7.92 [.312]	2	644720-2
DIM A	NO OF CIRCUITS	PART NO

7
SUPERSEDED

7
SUPERSEDED



THIS DRAWING IS A CONTROLLED DOCUMENT.		DWN B. LEWIS 24 AUG 95	TE Connectivity	
DIMENSIONS: mm [INCHES]		CHK R. SWING 24 AUG 95	MTA-156 CONNECTOR ASSEMBLY, 22 AWG, STANDARD	
TOLERANCES UNLESS OTHERWISE SPECIFIED: 0 PLC ± - 1 PLC ± - 2 PLC ± - 3 PLC ± 0.13 [.005] 4 PLC ± - ANGLES ± -		APVD D. CLARK 24 AUG 95	RESTRICTED TO	
MATERIAL		PRODUCT SPEC 108-1051	SIZE A2	CAGE CODE 00779
FINISH		APPLICATION SPEC 114-1020	DRAWING NO C-644720	SCALE 4:1
1		WEIGHT -	SHEET 1 OF 1	
1		CUSTOMER DRAWING		REV D